



FSWorks™

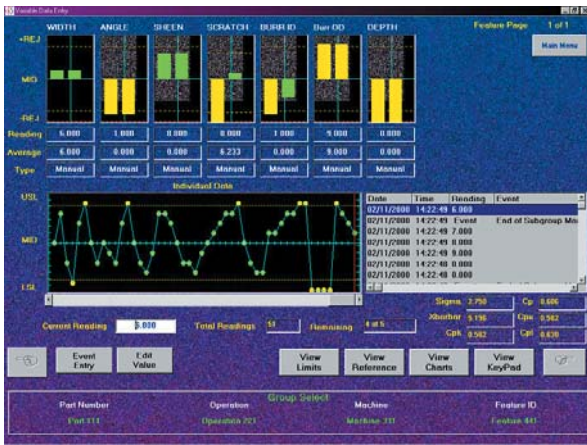
FSWorks™ is the most complete factory floor SPC software package on the planet. This feature packed powerhouse software is designed specifically for touchscreen applications such as *CimStat™* making it much easier for the operator to enter data, clear messages, depress *virtual switches*, retrieve spec plans, and on and on.

FSWorks™ even has a *Virtual Keyboard* and *Virtual Keypad* from which to enter data. This eliminates the need for bulky keyboards and pointing devices on the factory floor. However, *FSWorks™* will function just as well on standard PC's.



Here are some key features of the *CimStat™* Factory WorkStation:

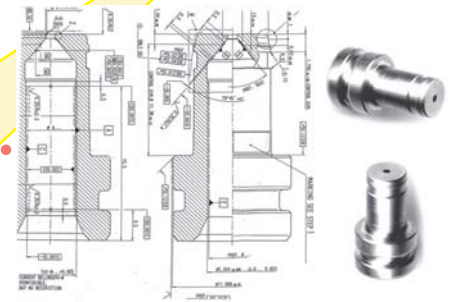
- * Windows 95/98/NT/2000 compatible
- * Touchscreen friendly
- * GUI displays for all aspects including alpha and numeric virtual keyboards
- * Variable and Attribute entry
- * Download and Upload of Spec Plans
- * Ability to view corporate reference documents
- * Fully Password Protected Supervisor modes
- * Virtual Switches
- * Closed Loop Control
- * Message Center
- * Local and/or remote data storage



The **Variable Data Entry** screen is an easy to understand layout containing real time bar graphs for virtually any number **and combination** of LVDT's, digital calipers and dial gauges, Heidenhain Glass Scale probes and analog signals. Along with real time bar graphs, the screen clearly shows actual readings in numeric form and a continually updating graph based on subgroups determined by the operator, supervisor or author of a particular spec plan. The bar graphs also change colors depending on whether the readings are within spec, borderline or out-of-control and offer other visual aids to enable the operator to see, at a moments glance, when the operations are successful or not.

A message center is available to alert the operator of any changes in system status, out of spec readings encountered, etc.

The ability to View Reference documents is a feature designed to provide factory floor operators with such things as test procedures, control documents and part drawings during the manufacturing or quality control operations.



The **Virtual Keypad** allows the operator to enter numeric values into manual data entry fields, update spec limits, etc.

Wherever numeric data can be entered, the operator will find the button to display this keypad.



The **Virtual Keyboard** offers the same services to the operator as the **Virtual Keypad** but with alpha and numeric options. Once again, if manual data can be entered or information changed in any

way, the button to display this keyboard will be available.

Within **FSWorks™**, an operator can ask for a chart to be calculated and displayed using limits and data resident within variable data entry. Several charting solutions are available including Histograms (shown), Xbar, Pareto and Cu Sum.

Since **FSWorks™** can be linked (via standard NIC) to a host PC on the corporate LAN/WAN, it also has the ability to share all data files with the complete **FSGold™** host package. **FSGold™** contains modules for report generation, chart generation, spec plan authoring / maintenance and communications conduit.

